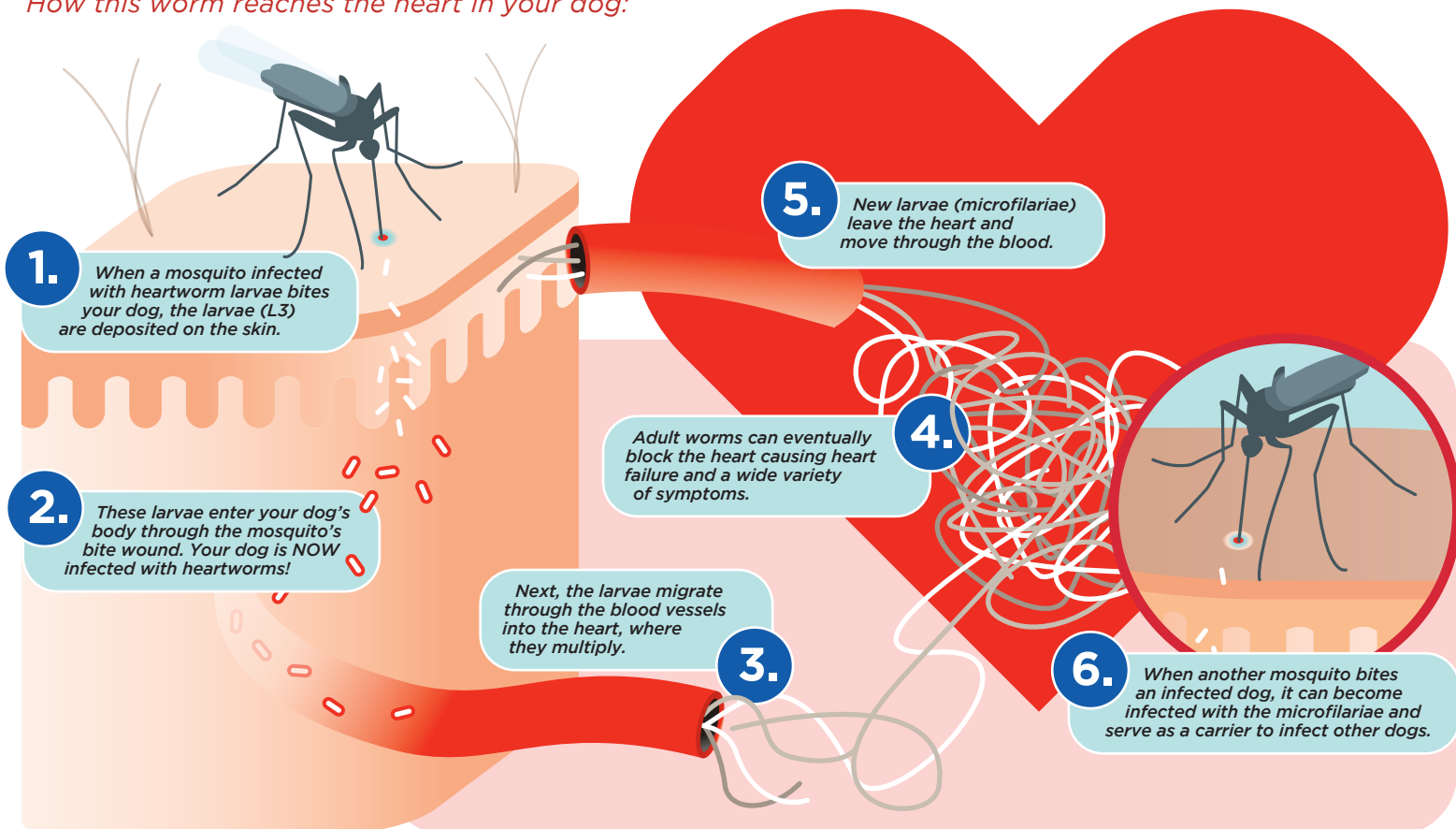


# Dangers of Mosquitoes and Heartworm

Heartworm disease is a serious and potentially fatal disease in dogs and the mosquito plays an essential role in the heartworm life cycle. Heartworm disease is a vector-borne disease with the mosquito as the vector that transmits heartworms to dogs. Vector control is a key component of preventing heartworm disease in our cherished canine companions.

*How this worm reaches the heart in your dog:*



The dog is a natural host for heartworms, which means that heartworms that live inside the dog mature into adults, mate and produce offspring.<sup>1</sup>

Mosquitoes start transmitting heartworm when only one infected mosquito takes a bite, leaving tiny heartworm larvae behind.<sup>1</sup>

On average, dogs won't test positive for heartworm for 6 months because it takes approximately 6 months for larvae to mature. Once mature, they can live 5 to 7 years in dogs with each mosquito season leading to the possibility of an increasing number of worms.<sup>1</sup>

In the early stages of heartworm disease, many dogs show few or no symptoms. Signs of heartworm disease include mild persistent cough, reluctance to exercise, fatigue, decreased appetite and weight loss.<sup>1</sup>

Heartworm infections continue to increase in number and geographic distribution.<sup>2</sup> Heartworm has now been diagnosed in all 50 states.<sup>1</sup>

Pets should be tested for heartworm infection every 12 months and should be protected 12 months a year with a topical repellent and an oral heartworm preventive.<sup>1</sup>

Heartworm protection and prevention should start as early as the product label allows and no later than 8 weeks of age.<sup>1</sup>

**DOUBLE DEFENSE**  
HEARTWORM PROTOCOL  
A NEW STANDARD OF CARE  
VECTRA® 3D AND A HEARTWORM PREVENTIVE

1. American Heartworm Society, (n.d.), *Heartworm Basics*. Retrieved January 12, 2017, from <https://www.heartwormsociety.org/pet-owner-resources/heartworm-basics>

2. Companion Animal Parasite Council, (n.d.), *Canine Heartworm*. Retrieved January 12, 2017, from <https://www.ccapvet.org/capc-recommendations/canine-heartworm/>

DO NOT USE VECTRA® 3D ON CATS.

© 2017 Ceva Animal Health, LLC  
Vectra® 3D logo is a registered trademark of Ceva Animal Health, LLC  
Double Defense TM logo is the property of Ceva Animal Health, LLC

For more information visit  
[www.fightheartwormnow.com](http://www.fightheartwormnow.com)  
#FightHeartworm